

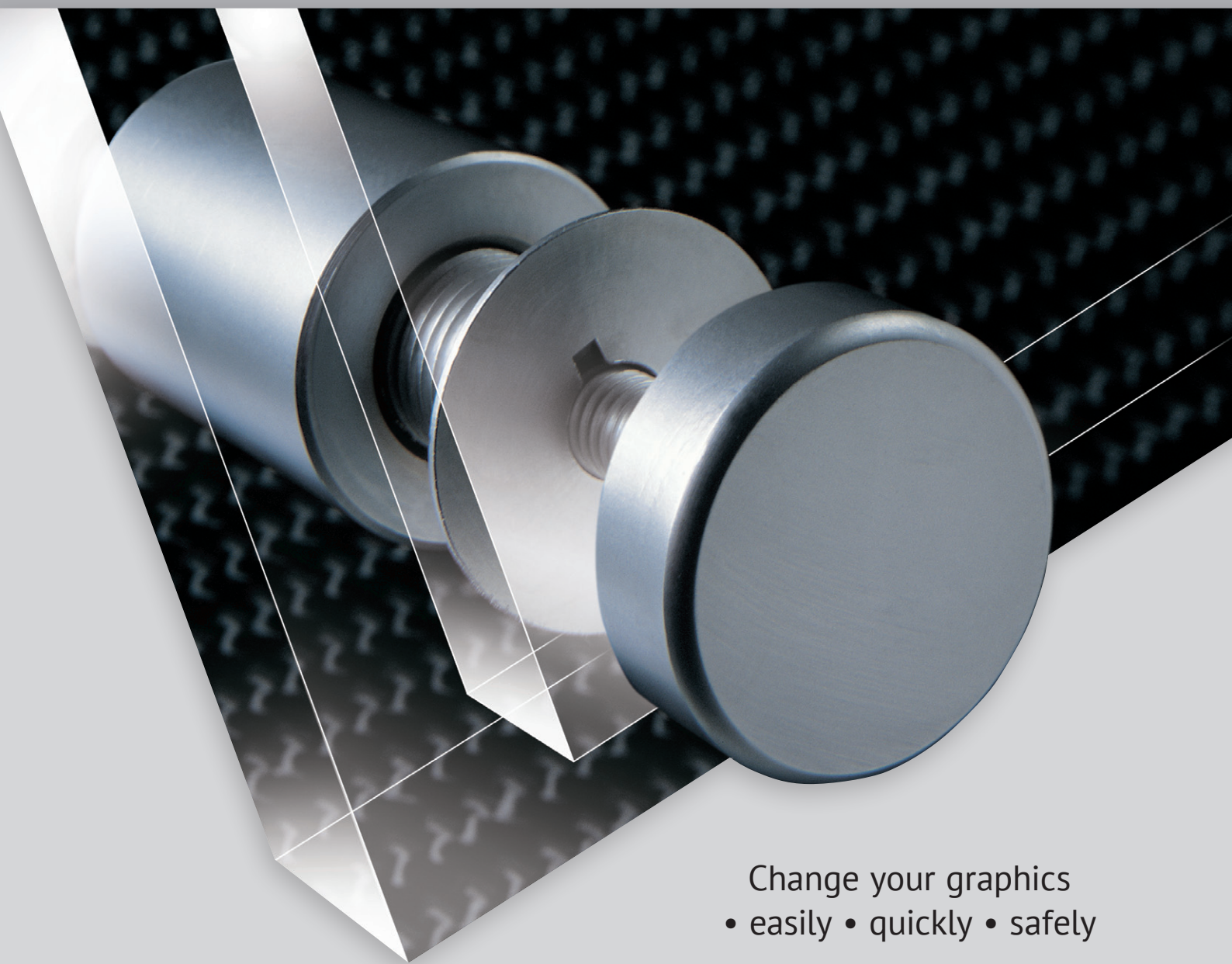
NZ·azz



multi·mounts

Best for changeable graphic displays

www.modernsigns.co.nz



Change your graphics
• easily • quickly • safely



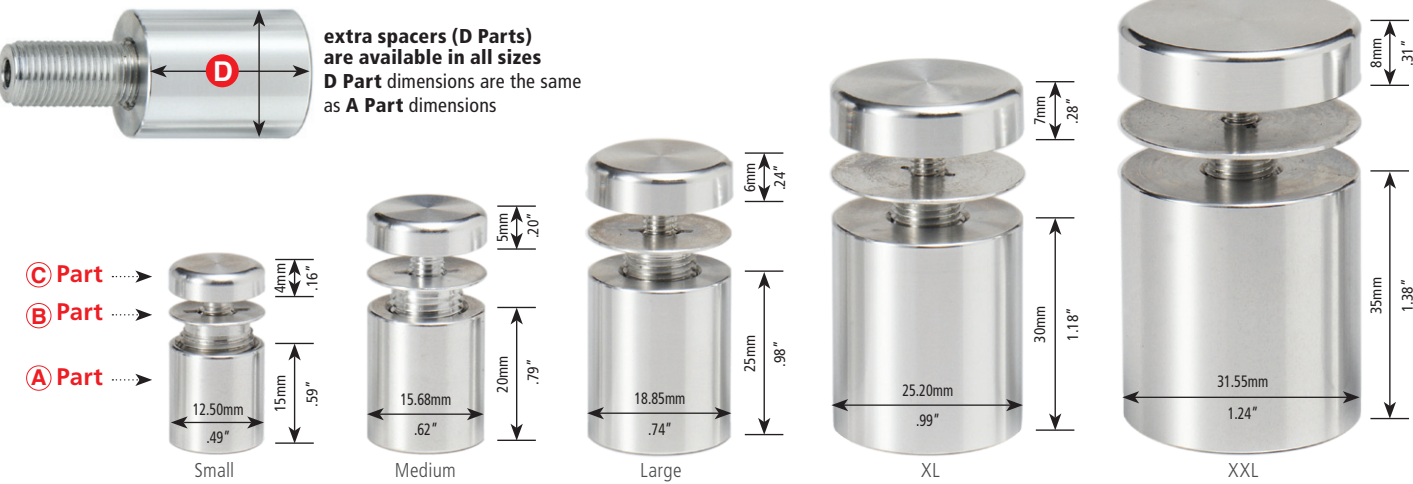
Modern Signs

Email: info@modernsigns.co.nz

Phone: 09 379 0397

Web: www.modernsigns.co.nz

SIZES AND DIMENSIONS



DESIGNER COLLECTION

Available with the finishes and colours below in Small, Medium, Large, XL and XXL sizes



HYBRID COLLECTION

Gloss clear resin A and B Parts with the C Part options below in Small, Medium, Large and XL sizes



RESIN COLLECTION

Standard colours - available with a Gloss or Matt finish in Small, Medium and Large sizes



RESIN COLLECTION

PT colours - available with a Gloss or Matt finish in Small, Medium and Large sizes



NZ•azz

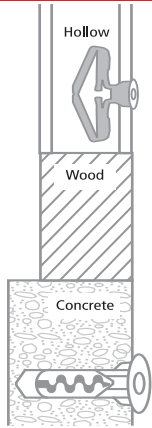


multi•mounts

Change your graphics • easily • quickly • safely

STANDARD PARTS

Are **A** + **B** + **C** Parts which are sold as a set - Optional extra **D** Parts are sold separately

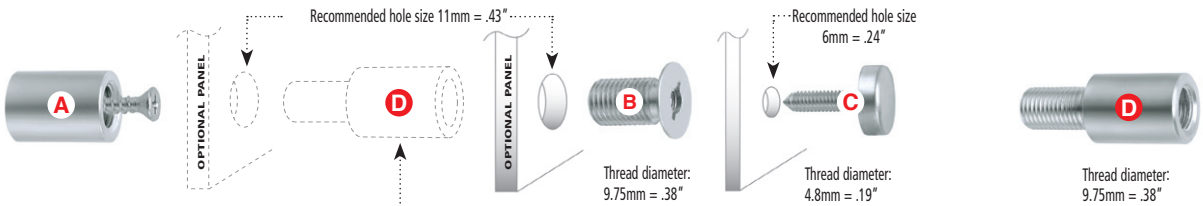


The internal back wall of **A Parts** are designed to accommodate the head of an 8 or 9 gauge countersunk screw or bolt.

B Parts screw into **A** or **D Parts**.

C Parts screw into **B Parts**.

D Parts screw between **A** and **B Parts**.



Important:
Use approved wall anchors when required.

extra spacers (**D Parts**) are used to hold more panels and/or increase the standoff distance.

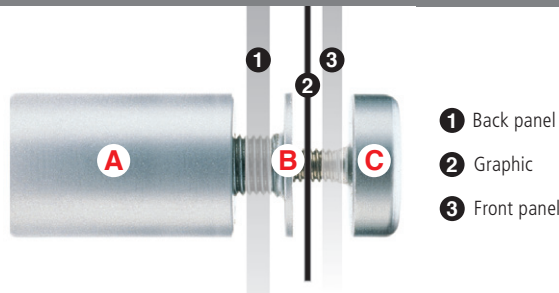
For part sizes, panel thickness and weight capacities, visit www.nzazz.nz

GRAPHIC DISPLAYS

Graphics are held between back panels and front panels

Patented multimounts unique functionality makes:

- installation is simple
- graphic changes are easy, fast and safe because when the **C Parts** are unscrewed the back panel remains secured in place



- 1 Back panel
- 2 Graphic
- 3 Front panel

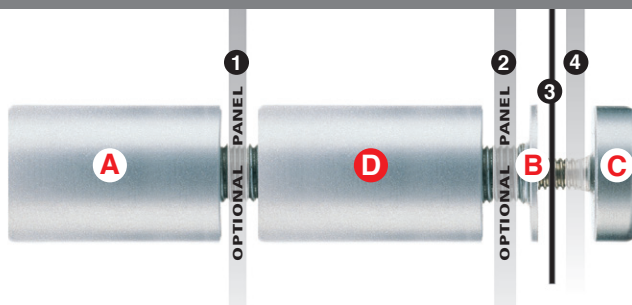


MULTIPLE LAYERS

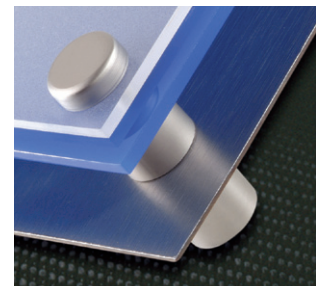
Panels are secured between **A** + **D** Parts and **D** + **B** Parts and **B** + **C** Parts

Using extra spacers (**D Parts**) give you more creative options including:

- multiple panel layers with different colours and textures
- offsetting some layers
- **D Parts** can also be used to increase the standoff distance



- 1 Optional panel
- 2 Optional panel
- 3 Optional graphic
- 4 Front panel



SALES TOOLS

Are available, including the monomount + multimount Display Pack below



Display Pack Bag



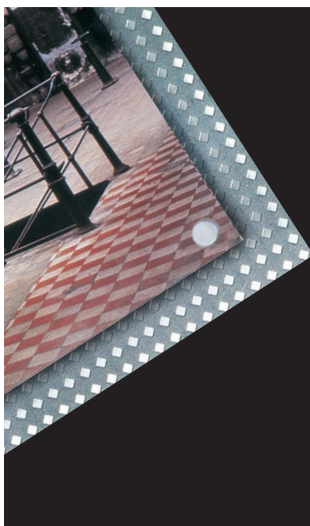
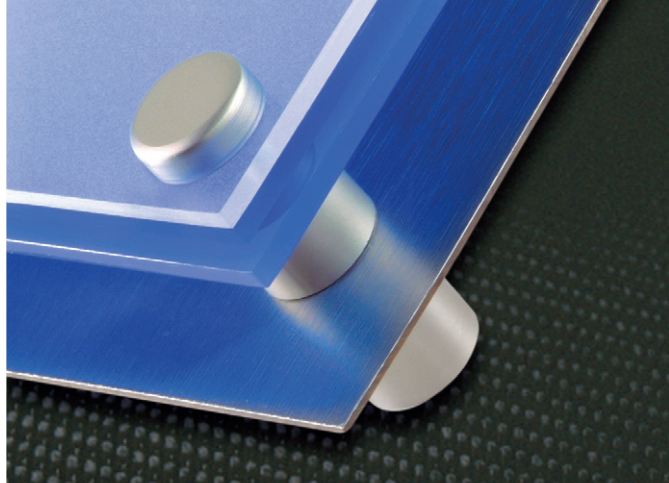
Side One



Side Two

For panel mounting, see our innovative monomount standoff system at: www.modernsigns.co.nz

multimounts are patented under US Patents # 6,470,612, # 6,974,290, European Patent #1095366 and counterparts thereof in other countries.



Modern Signs

Email: info@modernsigns.co.nz

Phone: 09 379 0397

Web: www.modernsigns.co.nz